

IMPORTANT NOTICE

The Pilotage Passage Plan is merely a recommendation of the preferred route to be taken by vessels when navigating in the indicated area/s and any Pilot or Master should exercise his own discretion and be prepared to depart from the Pilotage Passage Plan when circumstances dictate. PSA Marine Pte Ltd shall not be liable for any losses, liabilities (whether accrued, absolute, contingent or otherwise), damages (including consequential losses and damages payable to third parties), deficiencies, expenses, injury or death howsoever arising whether or not due to any form of reliance on or usage of any Pilotage Passage Plan or deviation thereof.

PSA MARINE PTE LTD

Singapore Pilotage; Pre-Boarding Passage Plan and Information Exchange

Revised on
June 2024

PEBGC – OMU (11, 12 & 13)				
Waypoint	Latitude (D° M.m')	Longitude (D° M.m')	Course	Distance
1	01° 15.885' N	103° 57.834' E	---	---
2	01° 15.066' N	103° 56.187' E	246 ° (T)	1.84 nm
3	01° 14.368' N	103° 54.927' E	241° (T)	1.44 nm
4	01° 13.903' N	103° 53.367' E	254 ° (T)	1.63 nm
5	01° 13.129' N	103° 51.851' E	257 ° (T)	1.70 nm
6	01° 12.664' N	103° 51.208' E	234 ° (T)	0.79 nm
7	01° 12.397' N	103° 50.268' E	254° (T)	0.98 nm
8	01° 12.643' N	103° 48.379' E	277° (T)	1.90 nm
9	01° 13.953' N	103° 47.147' E	317° (T)	1.80 nm
10	01° 15.141' N	103° 46.636' E	337° (T)	1.30 nm
11	01° 15.736' N	103° 45.996' E	313° (T)	0.87 nm
12	01° 16.323' N	103° 45.221' E	307° (T)	0.97nm
13	01° 14.128' N	103° 41.802' E	238° (T)	4.06nm
14	01° 14.652' N	103° 41.628' E	341° (T)	0.55 nm
BERTH	VARIOUS COURSE, SPEED, TUG MEET/DISMISSAL POINT AND MOORING ARRANGEMENT AS PER MASTERS ORDER AND PILOT'S ADVICE			
Total Distance :				19.83 nm

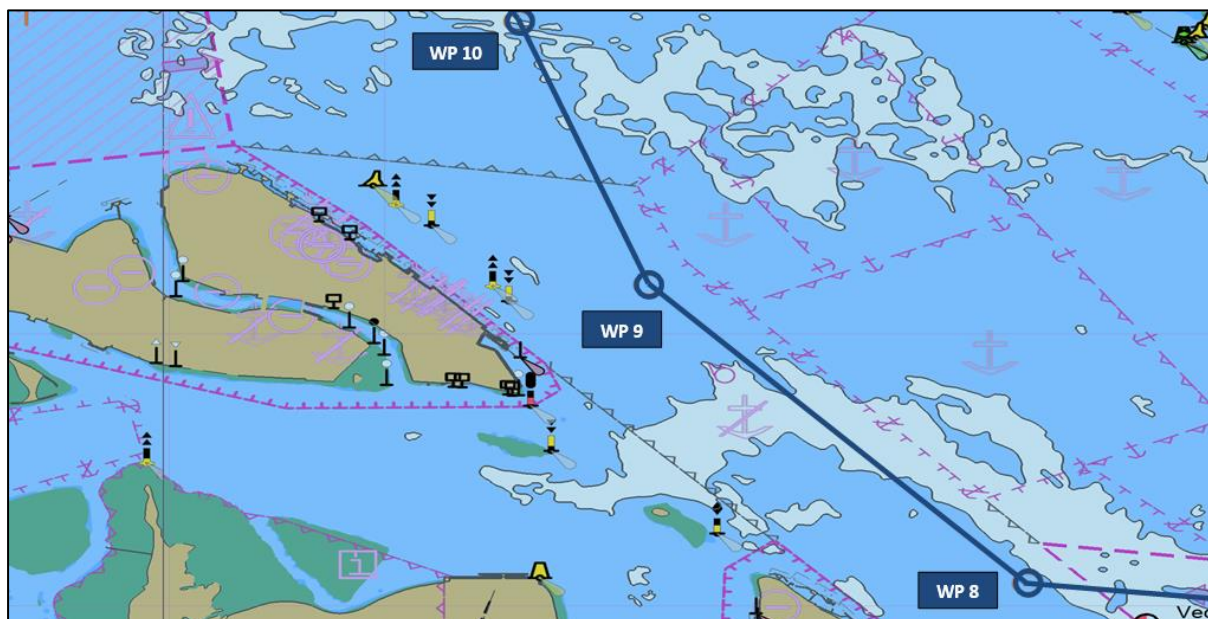
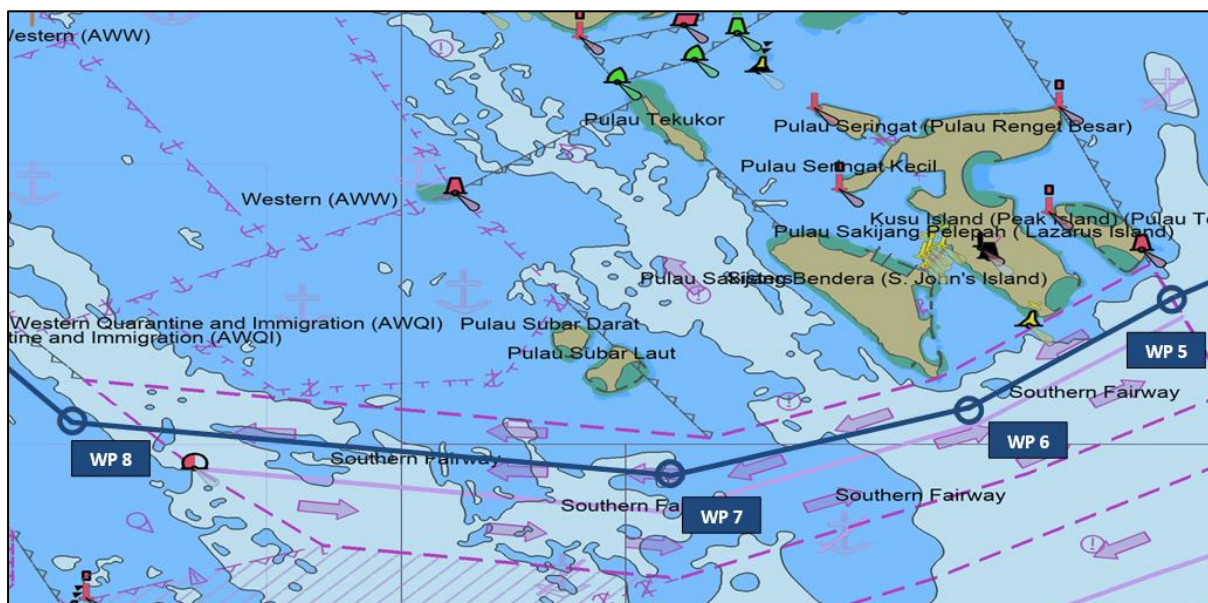
Singapore Pilotage; Pre-Boarding Passage Plan and Information Exchange

Revised on
June 2024



Singapore Pilotage; Pre-Boarding Passage Plan and Information Exchange

Revised on
June 2024



Singapore Pilotage; Pre-Boarding Passage Plan and Information Exchange

Revised on
June 2024



CHART NOT TO BE USED FOR NAVIGATION AND DEPTHS ARE NOT UPTO DATE