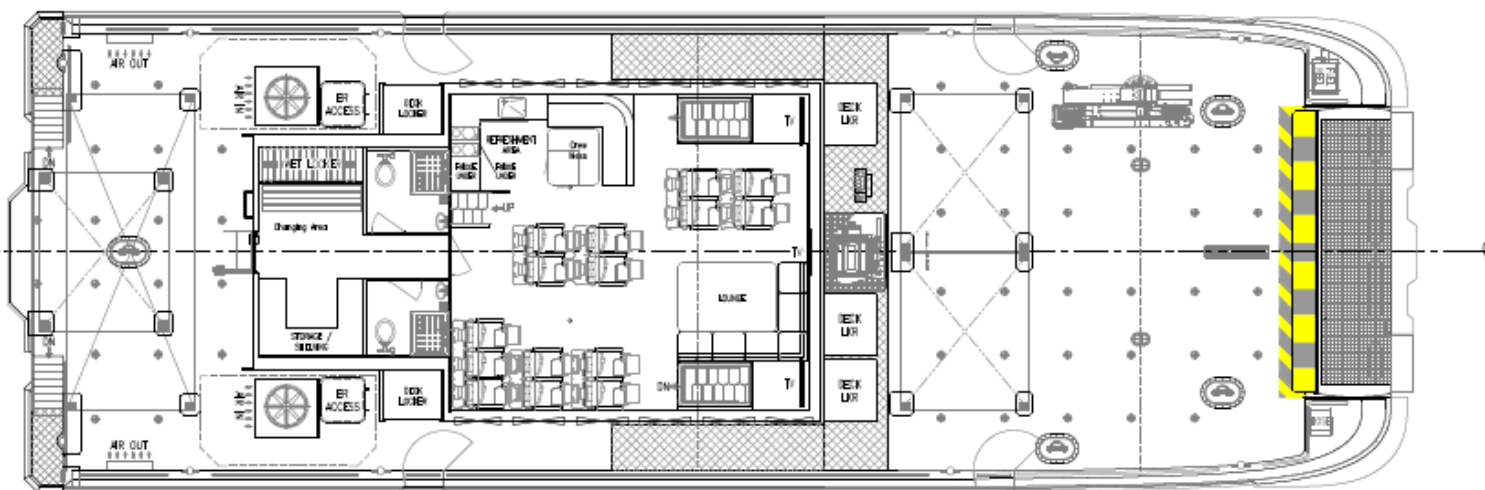


## 26M MULTIPURPOSE CREW TRANSFER VESSEL



BV: I HULL MACH Wind farms service ship - S0 - Sea Area 2  
CR: CR100+ Aluminium Alloy Hull, Work Boat, LSC, Greater Coastal Service , CMS+



# VENTUS XINGANG

## OVERVIEW

Length Overall:	26.0 m
Breadth:	8.9 m
Depth:	3.85 m
Maximum Draft:	1.60 m
Gross Tonnage:	199 GT
Dead Weight:	30t
Main Engines:	2 x 1449 bhp @ 2300 rpm
Aux Engines:	2 x 82 bhp @1500 rpm
Propulsion:	2 x FPP
Bow Thrusters:	2 x 50 hp

## DECK AREA

Fwd Deck:	69.7m2
Aft Deck:	25.3m2
Loading:	2t/m2
10ft & 20ft Container Points	
Multiple Tie Down Points	

## PASSENGER CAPACITY

12 Pax + 6 Crew

## TANK CAPACITY

Fuel Oil:	35,000 litres
Fresh Water:	3,000 litres

## SPEED

Service Speed (light):	23 kts
Sprint Speed (light):	26 kts

## DECK EQUIPMENT

- Fuel Transfer System (Including 40m deck reel)
- High Pressure Washer
- Crane
  - Make/Model: Palfinger / PK12000(M)B
  - Lifting Capacity: 0.8T @ 10.2m
  - Maximum Outreach: 10.2m

## LSA EQUIPMENT

EPIRB, Rescue Area Control Systems, Sea Marshall  
MOB Finder, Matesaver & MOB Davits, Rescue  
Areas

## ADDITIONAL FEATURES

Active bow fender system  
Intercom covering all areas incl. engine room  
CCTV covering all areas incl. engine room  
Loud hailer  
Flood Lighting & Search Lighting  
Dive Platforms  
Lifting Lugs (& Strops)

## CREW COMFORT

Additional seating (sofa style) and communal  
table area  
Executive reclining seats with international sockets  
3 x LCD TVs with DVD  
Noise/Vibration insulation  
Changing area and drying storage area  
2 x WCs; 2 x Showers  
Full galley incl. instant hot water and combi oven

## ELECTRONIC & NAVIGATIONAL EQUIPMENT

2 X Radar; ECDIS; ECS; Navtex; DGPS; Autopilot;  
AIS; Sat/Magnetic Compasses; 4 X VHF (3  
handheld); 1 X UHF Radio, Inmarsat;  
Speedlog; Wifi 4G Network