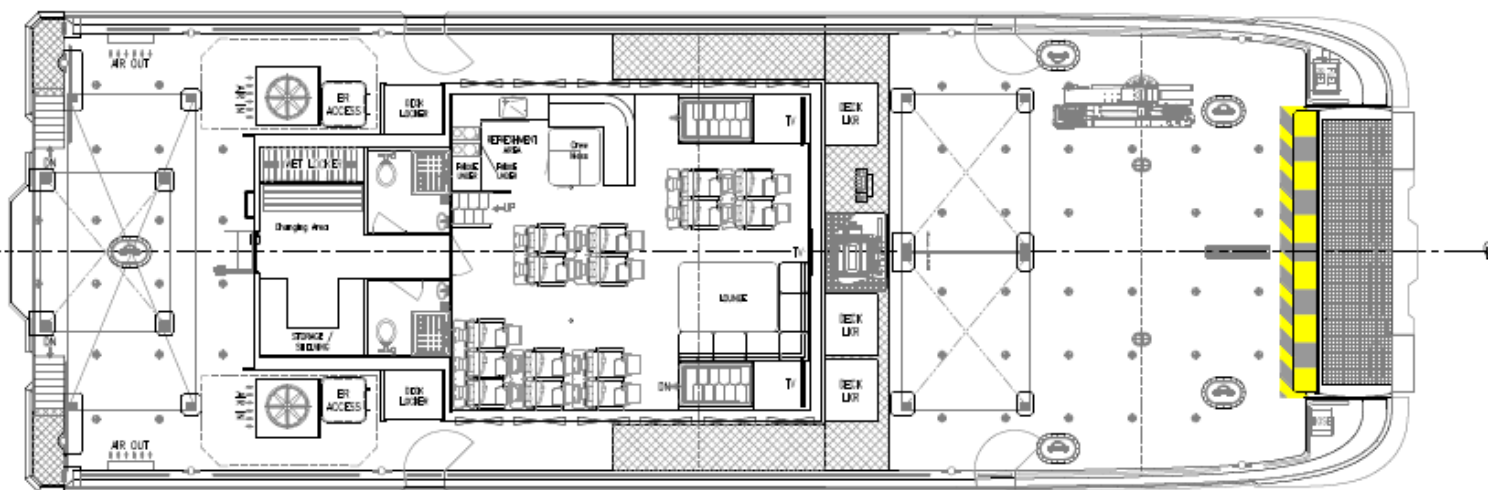


26M MULTIPURPOSE CREW TRANSFER VESSEL



BV: I HULL MACH Wind farms service ship - S0 - Sea Area 2
 CR: CR100+ Aluminium Alloy Hull, Work Boat, LSC, Greater Coastal Service , CMS+



VENTUS BEIGANG

OVERVIEW

Length Overall:	26.0 m
Breadth:	8.9 m
Depth:	3.85 m
Maximum Draft:	1.60 m
Gross Tonnage:	199 GT
Dead Weight:	25t
Main Engines:	2 x 1449 bhp @ 2300 rpm
Aux Engines:	2 x 82 bhp @1500 rpm
Propulsion:	2 x FPP
Bow Thrusters:	2 x 50 hp

DECK AREA

Fwd Deck:	69.7m2
Aft Deck:	25.3m2
Loading:	2t/m2
10ft & 20ft Container Points	
Multiple Tie Down Points	

PASSENGER CAPACITY

12 Pax + 6 Crew

TANK CAPACITY

Fuel Oil:	35,000 litres
Fresh Water:	3,000 litres

SPEED

Service Speed (light):	23 kts
Sprint Speed (light):	26 kts

DECK EQUIPMENT

- Fuel Transfer System (Including 40m deck reel)
- High Pressure Washer
- Crane
 - Make/Model: Palfinger / P23500MA
 - Lifting Capacity: 2T @ 8m
 - Maximum Outreach: 8m

LSA EQUIPMENT

EPIRB, Rescue Area Control Systems, Sea Marshall
MOB Finder, Matesaver & MOB Davits, Rescue
Areas

ADDITIONAL FEATURES

Active bow fender system
Intercom covering all areas incl. engine room
CCTV covering all areas incl. engine room
Loud hailer
Flood Lighting & Search Lighting
Dive Platforms
Lifting Lugs (& Strops)

CREW COMFORT

Additional seating (sofa style) and communal
table area
Executive reclining seats with international sockets
3 x LCD TVs with DVD
Noise/Vibration insulation
Changing area and drying storage area
2 x WCs; 2 x Showers
Full galley incl. instant hot water and combi oven

ELECTRONIC & NAVIGATIONAL EQUIPMENT

2 X Radar; ECDIS; ECS; Navtex; DGPS; Autopilot;
AIS; Sat/Magnetic Compasses; 4 X VHF (3
handheld); 1 X UHF Radio, Inmarsat;
Speedlog; Wifi 4G Network