



### PRINCIPAL PARTICULARS

Year Built	: 2019
Builder	: PaxOcean Engineering Zhuhai Co., Ltd
Designer	: Wärtsilä Ship Design
Class	: Bureau Veritas Singapore, Tug – Dual Fuel, AUT - UMS, *IWS, Singapore Coastal Services up to 30 nautical miles from shore
Flag	: Singapore
Call Sign	: 9V3289
IMO No.	: 9853694
Official No.	: 401424

### DIMENSIONS

Length Overall	: 28.80m
Breadth Moulded	: 13.00m
Depth Moulded	: 5.80m
Design Draft	: 4.00m (from baseline)
Navigational Draft	: 5.10m (max)
Gross Tonnage	: 481
Net Tonnage	: 144

### MACHINERY & EQUIPMENT

Main Engines	: 2 x 1665kW Wärtsilä W9L20DF @ 1200rpm
Generators	: 2 x 164kW Perkins E70TAG3M @ 1500rpm
Propellers	: 2 x Wärtsilä WST-16 FP
Air Compressors	: 2 x Sperre HL2/77A
Oily Water Separator	: Taiko Kikai USH-05
Sewage System	: Taiko Kikai SBH-15
CCTV System	: Hikvision with 9 cameras
Ultrasonic Anti-fouling	: Citadel AF204C & AF201T

### ACCOMMODATION (FULLY AIR-CONDITIONED)

Officers	: 2 x 1 berth
Crew	: 2 x 2 berths
Total	: 6 berths (MLC 2006 compliance)
Air-con system	: Cruisair (Chilled Water Type)

### PERFORMANCE DATA

Max speed	: 12.67 knots
Bollard pull (ahead)	: 53.22 tonnes
Bollard pull (astern)	: 50.31 tonnes

### TANK CAPACITIES

LNG	: 25.4m <sup>3</sup>
Fuel oil	: 107.0m <sup>3</sup>
Freshwater	: 46.2m <sup>3</sup>
Ballast (FW)	: 139.6m <sup>3</sup>

### TOWING AND DECK EQUIPMENT

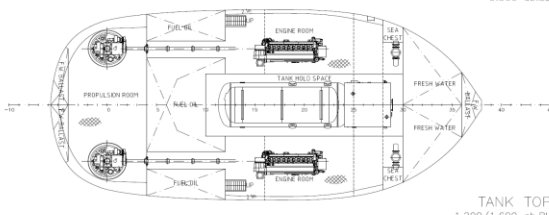
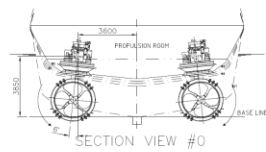
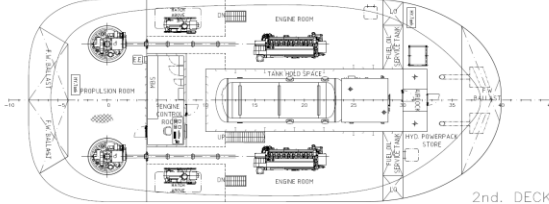
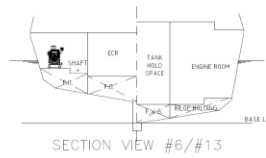
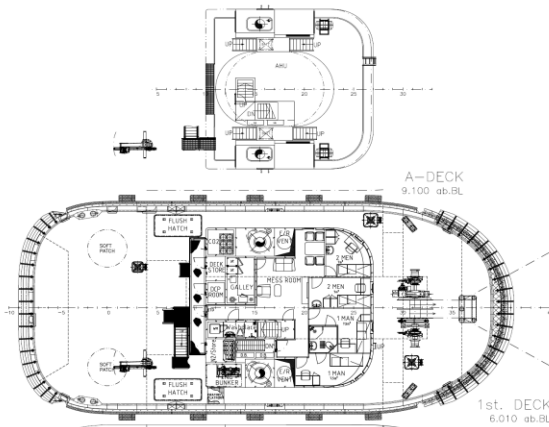
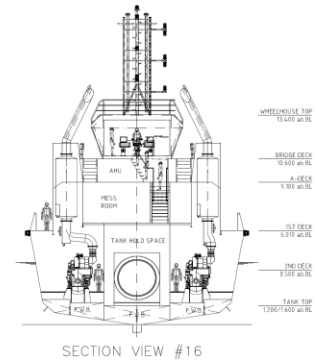
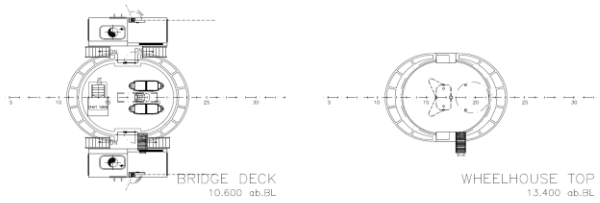
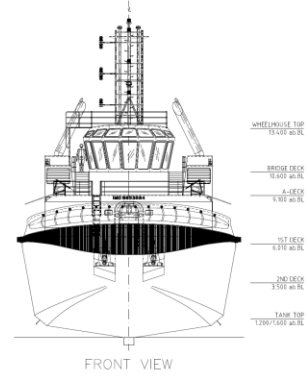
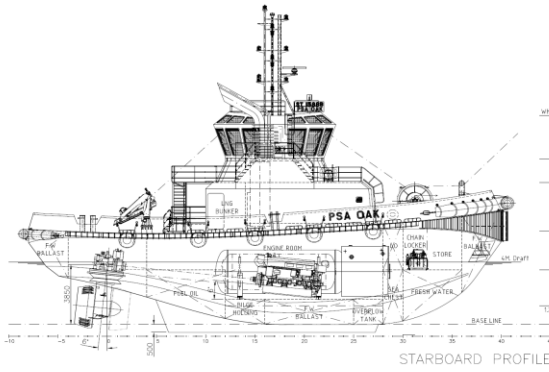
Towing Winch (fwd)	: Rolls-Royce High Pressure Hydraulic Winch TWH 1250/100/AW22U2
Drum Capacity	: 220m of dia 76 mm synthetic rope on nine layers on each drum parts.
Band Brake Holding Load	: Adjustable, 0 – 125 ton
Line Pull (Nominal)	: 2.0T @ 0–39m/min
Dimension	: Barrel dia. 620 mm, Flange dia. 2180 mm, Length 540 + 540 mm
Deck Crane	: Palfinger PK12000M SWL – 1.7.0t @ 6.1m outreach

### RADIO AND NAVIGATIONAL EQUIPMENT (GMDSS – A1)

X-Band Radar	: Furuno Model 1945
VHF Radiotelephone	: 2 x Furuno FM-8900S w/ DSC
VHF Radiotelephone (Private)	: Motorola XiR M8600I
Portable survival craft two-way VHF	: Jotron Tron TR-20 GMDSS
9 GHz SAR transponder (SART)	: Jotron Tron SART 20
406 MHz EPIRB	: Jotron Tron 60S
Navtex Receiver	: Furuno NX-700A/B
Talk Back System	: Vingtor CTB-10
Loud Hailing System	: Vingtor SPA-M1H-V2
Battery-less Telephone System	: Zenitel VSP
Echo Sounder	: Furuno FE-800
Magnetic compass	: Cassens Refleeta-III
Satellite compass	: Furuno SC-70
AIS	: Furuno FA-170
GPS	: Furuno GP-170
BNWAS	: Furuno BR-500

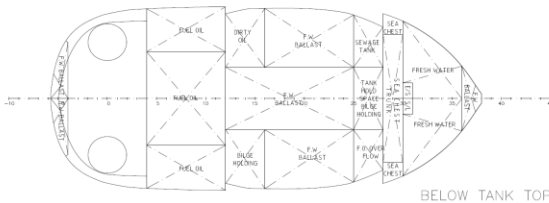


**WTUG 5802 LNG HT**



PRINCIPLE PARTICULARS	
LENGTH OVERALL (excluding fenders):	28.80 M.
LENGTH BETWEEN PERP.:	23.04 M.
BREADTH MOULDED (excluding fenders):	11.3.00 M.
DEPTH MOULDED @ THE LEAST:	5.80 M.
SCANTLING DRAFT:	4.60 M.
DESIGN DRAFT:	4.00 M.
FRAME SPACING:	0.50 M.
FUEL OIL:	110 M3.
FRESH WATER:	45 M3.
LIQUIFIED NATURAL GAS:	25 M3.
FLAG STATE:	SINGAPORE
PORT OF REGISTRY:	SINGAPORE
CREW:	6 MEN
GRT (approx.):	451

BY: 1-HULL 1-MACH. Tug. AUT-UMS. Dual-fuel. Coastal Area. INWATERSURVEY



REV	DESCRIPTION	DATE	BY	CHKD	RELEASED	SGN
0	As-Built Drawings					
28.8M 50MT BP LNG DUAL-FUELLED TUG		OWNER: PSA MARINE (PTE) LTD				
GENERAL ARRANGEMENT		YARD: PACIFICAN ENGINEERING PTE LTD				
		SCALE: 1:150	DATE: 02.04.2018	REV: 101		
		FORMAT: A1	NO.:	00204		
		WÄRTSILÄ PROJECT NO.:	40771	REV.:	0	
Wärtsilä Ship Design		DRAWING NO. 101-001				
14, ROBIN CROSSING		SHEET 1/1				
TEL: +65 6562 1138						
FAX: +65 6562 1238						
info@psa-marine.com						

Note: The information and sketches in this document are given in good faith without any express, implied or statutory warranty or condition.