

IMPORTANT NOTICE

The Pilotage Passage Plan is merely a recommendation of the preferred route to be taken by vessels when navigating in the indicated area/s and any Pilot or Master should exercise his own discretion and be prepared to depart from the Pilotage Passage Plan when circumstances dictate. PSA Marine Pte Ltd shall not be liable for any losses, liabilities (whether accrued, absolute, contingent or otherwise), damages (including consequential losses and damages payable to third parties), deficiencies, expenses, injury or death howsoever arising whether or not due to any form of reliance on or usage of any Pilotage Passage Plan or deviation thereof.

PSA MARINE PTE LTD

PEBGC – [AEBB, AEPBC, ASCB]

Waypoint	Latitude (D° M.m')	Longitude (D° M.m')	Course	Distance
PEBGC	01° 15.885'N	103° 57.834'E	---	---
ANCHORAGE	VARIOUS COURSE AND SPEED AS PER MASTERS ORDER AND PILOT'S ADVICE			
Total Distance :				

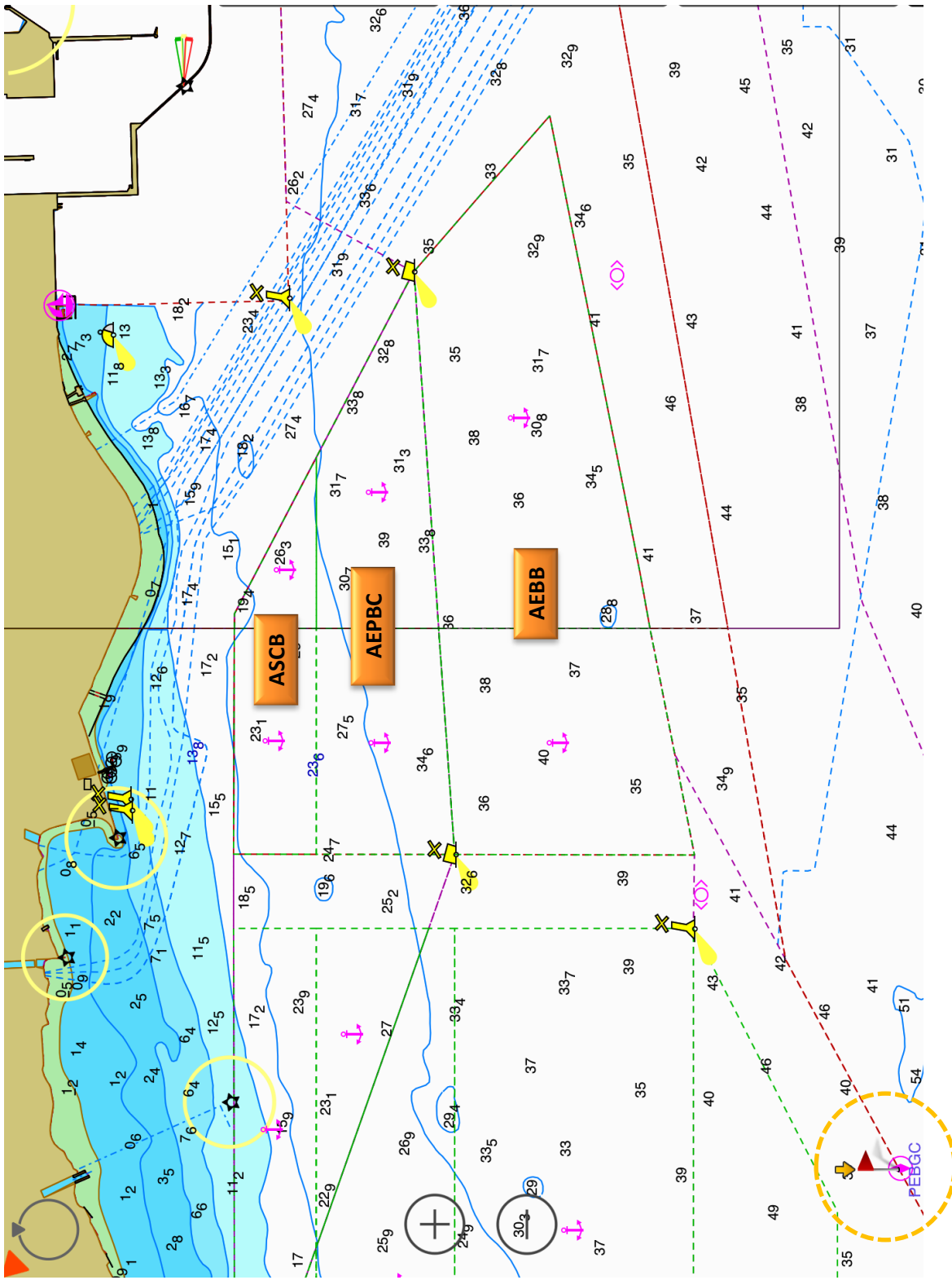


CHART NOT TO BE USED FOR NAVIGATION AND DEPTHS ARE NOT UP TO DATE